

**TRI R LANDFILL & RECYCLING CENTRE
2018 ANNOUNCEMENTS**

705-382-2682
landfill@armourtownship.ca
141 Chetwynd Road



HOURS OF OPERATION	Summer	Winter
Monday	10-5	11-5
NEW ** TUESDAY CLOSED **NEW		
WEDNESDAY CLOSED		
Thursday	10-5	11-5
Friday	10-5	11-5
Saturday	10-5	11-5
Sunday	10-5	11-5

**THE SITE WILL BE OPEN ON
TUESDAY JANUARY 2nd, 2018**

**SUMMER HOURS EFFECTIVE
MAY 1st TO AUGUST 31st**

PUBLIC HOLIDAYS

New Year's Day	CLOSED
Family Day	CLOSED
Good Friday	CLOSED
Easter Monday	CLOSED
Victoria Day *NEW *	OPEN
Canada Day	OPEN
Civic Holiday	OPEN
Labour Day	OPEN
Thanksgiving *NEW*	OPEN
Remembrance Day	CLOSED
Christmas Day	CLOSED
Boxing Day	CLOSED

BLUE BOX TONNAGE FOR 2017

**NEWSPAPERS,
MAGAZINES &
BOOKS
40.61 TONNES**



**CARDBOARD &
BOXBOARD
91.29 TONNES**



**CONTAINERS – PLASTIC, GLASS,
STEEL & ALUMINUM
140.89 TONNES**



**BAG YOUR
BAGS**

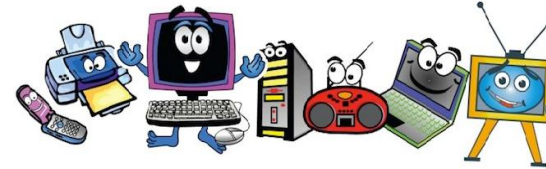


**SCRAP METAL
51.08 TONNES**



TOTAL REVENUE \$41,088

**ONTARIO ELECTRONICS STEWARDSHIP
23.92 TONNES = \$4,784**



Even though your old electronics are no longer of use to you, they contain valuable components and material that can be safely recycled to manufacture new products. Bring us anything with an electrical cord and we will recycle it.... **NO FEE APPLIED**



**ONTARIO TIRE STEWARDSHIP
1,884 PASSENGER TIRES = \$2,499
THROUGH OUR SITE IN 2017**

110,339,030 TIRES RECYCLED IN ONTARIO SINCE 2009



**BULBS & TUBES, CFL'S, HALOGENS, FLOODS
3,258 Bulbs and Tubes collected in 2017**

Fluorescent lamps have several hazards if broken. Breaking the glass can cause shrapnel injuries, along with the release of mercury and other hazardous compounds. The biggest threat from a broken lamp is from the phosphor-coated glass. If cut with fluorescent lamp glass, any phosphor that gets into the wound is likely to prevent blood clotting and will interfere with healing. Such injuries should be treated seriously and immediate medical attention should be obtained for people or pets that are cut. Medical personnel should be informed that the injuries were caused by a broken fluorescent lamp, and that mercury was present. For more information go to <http://www.ec.gc.ca/mercure-mercury>.

DIABETES CANADA | Drop Box



**In Partnership with the TRI Communal
Landfill & Recycling Centre
What type of donation will diabetes canada
accept?**

Clothing	Ties	Stuffed toys
Blankets	Belts	Socks
Linens	Curtains	Hats
Bags	Towels	Pillows
Mitts	Shoes	Sheets
Sleeping Bags		

100 per cent of net proceeds raised, directly support Diabetes Canada through advocacy, D-camps and research. Helping the 11 million Canadians with diabetes and prediabetes.

**THANK YOU FOR YOUR
GENEROUS DONATION!**

**For more information visit
www.declutter.diabetes.ca
or call 1-800-505-5525**

DISPOSABLE & RECHARGEABLE BATTERY

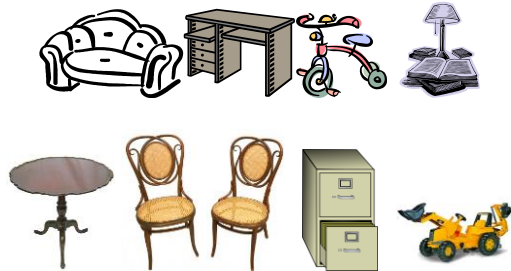
2098 Pounds of batteries were recycled in 2016



Don't forget battery packs for power tools are also recyclable. Raw Materials Company uses a mechanical process that separates all of the components of a primary

battery so they can be properly recycled. The recovered materials are used to make new products saving our earth's finite resources and the energy needed to mine them from ore.

REUSE AREA



Fees will apply to items dropped off for the TRI R Reuse center.

Clothing, coats, bedding, and towels will not be accepted at the TRI R Reuse. Consider donating these and other items to local reuse and second hand stores. Bedding, blankets and towels are almost always accepted at the local animal shelters and boarding kennels.

Donations of clothing, bedding and towels can also be placed in the Diabetes Canada Drop Box at the Reuse Centre.

Reduce. Reuse.
Recycle.

FULL USER PAY PROGRAM

Since February of 1972, the three municipalities; Armour, Burks Falls and Ryerson have shared the responsibility of providing Waste Management Programs to their residents at the TRI Communal Landfill and Recycling Centre.

Landfills in Ontario are regulated by the Ministry of the Environment and Climate Change (MOECC) and in 2016 the TRI Communal Landfill was at the end of its approved waste capacity.

After a 10 year application process with the MOECC our landfill was approved for expansion in April 2017. This expansion allows for an additional 27,700 cubic metres of waste. At our current annual fill rate this would provide residents with another 12 years of cost controlled waste management. The expanded landfill is a \$3 million dollar asset and each cubic metre of airspace (garbage space) is worth \$104. If you never put a bag in the landfill, why should you pay for landfill space?

The three municipalities fund the Waste Management Budget by collecting taxes from their residents and blue box funding through the provincial government (Resource Productivity and Recovery Authority).

It is the intention of the three municipal councils to move toward a full user pay system, which will mean the residents who place waste in the landfill will pay for the space they use.

As a resident that recycles blue box materials, composts in their yard and participates in our various diversion programs, this cost will be minimal.

The current cost for this service is incorporated into your property taxes, and is based on the assessed value of your property. This means, you may never put a bag of garbage in the landfill but you still have to pay for it, according to the tax rate. It also means, not everyone pays accordingly for the landfill space they consume.

A Full User Pay System will turn the tables and reduce the cost for our environmental residents that do their part to extend the life of our landfill.

Our current landfill pass system will continue until June 30, 2018. If you have used up your 45 "free bags" then you will pay \$3 per 128 litre bag and \$5 per 205 litre bag to dispose of waste at the landfill as of January 1st 2018. Our tipping fees have also increased to recognize the value of air space. If you want to dispose of construction waste, then you will pay for the airspace and processing. Your neighbour should not have to pay for your waste.

Our goal is to be "cash free" by July of 2018, which means we will be installing a debit machine for payment of applicable tipping fees. We are also investigating a swipe card system to replace the paper passes we currently use. More information will be provided as it becomes available.

REVISED TIPPING FEES EFFECTIVE JANUARY 1st, 2018

ITEM	FEE
Construction, Demolition & Agricultural Materials	
Waste other than non-recyclable	\$5.00
1/2 ton truck (less than 50%)	\$30.00
1/2 ton truck (more than 50%)	\$70.00
Utility trailer based	\$2.00/ft ³
Tandem - dump truck	\$500.00
Tri-axle - dump truck	\$600.00
20 yard container	\$500.00
40 yard container	\$1000.00
Non-Recyclable Waste	
Bag Size 30" X 36" or 128 litres	\$3.00
Bag Size 35" X 50" or 205 litres	\$5.00
1/2 ton truck	\$150.00
Tandem - dump truck	\$500.00
Tri-axle - dump truck	\$600.00
20 yard container	\$500.00
40 yard container	\$1000.00
Appliances - Refrigerator, Freezer, Air Conditioners	
Tagged and Freon removed	\$5.00
Untagged	\$25.00
Bulky Items	
Chair, loveseat, etc. (each)	\$7.00
Sofa (each)	\$10.00
Mattress, boxspring (each)	\$25.00
Boat - per foot	\$3.00/ft
Yard Waste & Brush - Grass Clippings, Leaves, Brush	
Per bag/bin	\$2.00
1/2 ton truck (low 40%)	\$5.00
1/2 ton truck (heavy 100%)	\$10.00