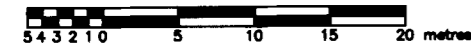


COPY

PLAN OF SURVEY
OF PART OF
LOT 22, CONCESSION 13

AND PART OF THE
ORIGINAL 20.117m ROAD ALLOWANCE
BETWEEN CONCESSIONS 12 AND 13,
ADJACENT TO LOT 21, CONCESSION 12
AND LOT 22, CONCESSION 13

TOWNSHIP OF RYERSON
DISTRICT OF PARRY SOUND
SCALE 1 : 500 (Metric)



E. J. WILLIAMS O.L.S.

I REQUIRE THIS PLAN TO BE DEPOSITED UNDER THE LAND TITLES ACT.

PLAN 42R-20702

RECEIVED AND DEPOSITED

DATE: MARCH 22, 2017

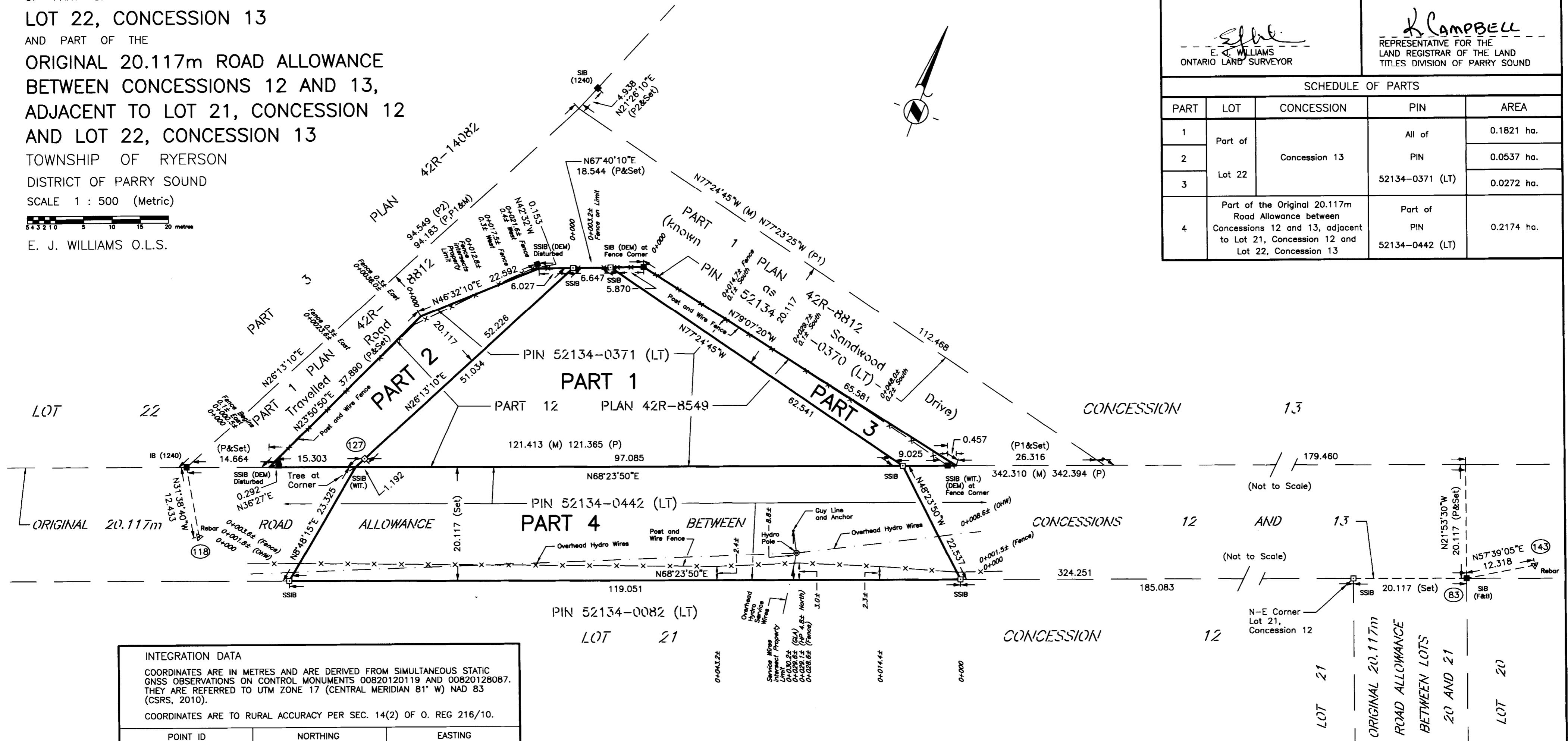
DATE: March 28, 2017

E. J. Williams
E. J. WILLIAMS
ONTARIO LAND SURVEYOR

K. Campbell
REPRESENTATIVE FOR THE
LAND REGISTRAR OF THE LAND
TITLES DIVISION OF PARRY SOUND

SCHEDULE OF PARTS

PART	LOT	CONCESSION	PIN	AREA
1	Part of	Concession 13	All of	0.1821 ha.
2	Lot 22		PIN	0.0537 ha.
3			52134-0371 (LT)	0.0272 ha.
4	Part of the Original 20.117m Road Allowance between Concessions 12 and 13, adjacent to Lot 21, Concession 12 and Lot 22, Concession 13		Part of PIN	0.2174 ha.
			52134-0442 (LT)	



INTEGRATION DATA

COORDINATES ARE IN METRES AND ARE DERIVED FROM SIMULTANEOUS STATIC GNSS OBSERVATIONS ON CONTROL MONUMENTS 00820120119 AND 00820128087. THEY ARE REFERRED TO UTM ZONE 17 (CENTRAL MERIDIAN 81° W) NAD 83 (CSRS, 2010).

COORDINATES ARE TO RURAL ACCURACY PER SEC. 14(2) OF O. REG 216/10.

POINT ID	NORTHING	EASTING
83	5052951.781	613374.988
118	5052833.865	613055.827
127	5052856.546	613077.685
143	5052958.370	613385.392
00820120119	5054761.946	623647.951
00820128087	5051747.926	624373.003

COORDINATES CANNOT, IN THEMSELVES, BE USED TO RE-ESTABLISH CORNERS OR BOUNDARIES SHOWN ON THIS PLAN.

BEARINGS ARE UTM GRID, DERIVED FROM SIMULTANEOUS GPS OBSERVATIONS FROM POINT 118 TO 143, HAVING A BEARING OF N69°18'15"E, UTM ZONE 17 CENTRAL MERIDIAN 81° W NAD 83 (CSRS, 2010).

FOR BEARING COMPARISONS, A ROTATION OF 1°01'50" COUNTER-CLOCKWISE WAS APPLIED TO BEARINGS ON UNDERLYING PLANS.

DISTANCES ARE GROUND AND CAN BE CONVERTED TO GRID BY MULTIPLYING BY THE COMBINED SCALE FACTOR OF 0.99971601.

LEGEND

SIB	DENOTES STANDARD IRON BAR
SSIB	DENOTES SHORT STANDARD IRON BAR
IB	DENOTES IRON BAR
WIT.	DENOTES WITNESS
■	DENOTES MONUMENT FOUND
□	DENOTES MONUMENT PLANTED
(1240)	DENOTES EERO HALINEN O.L.S.
(DEM)	DENOTES D. E. MAGEE O.L.S.
(F&B)	DENOTES FITZMAURICE AND BOYER O.L.S.
P	DENOTES PLAN 42R-8549
P1	DENOTES PLAN 42R-8812
P2	DENOTES PLAN OF SURVEY BY EERO HALINEN O.L.S. DATED SEPTEMBER 3, 1970 OF RECORD IN THIS OFFICE.
M	DENOTES MEASURED
GLA	DENOTES GUY LINE ANCHOR
HP	DENOTES HYDRO POLE
OHW	DENOTES OVERHEAD HYDRO WIRES

METRIC: COORDINATES AND DISTANCES SHOWN ON THIS PLAN ARE IN METRES AND CAN BE CONVERTED TO FEET BY DIVIDING BY 0.3048.

SURVEYOR'S CERTIFICATE

I CERTIFY THAT:

- THIS SURVEY AND PLAN ARE CORRECT AND IN ACCORDANCE WITH THE SURVEYS ACT, THE SURVEYORS ACT AND THE LAND TITLES ACT AND THE REGULATIONS MADE UNDER THEM.
- THE SURVEY WAS COMPLETED ON THE 27th DAY OF JANUARY, 2017.

MARCH 22, 2017
Huntsville, Ontario

E. J. Williams
E. J. WILLIAMS
ONTARIO LAND SURVEYOR

EJWILLIAMS SURVEYING LIMITED

ONTARIO LAND SURVEYORS
PLANNERS

BURK'S FALLS HUNTSVILLE SOUTH RIVER

Main Office: 6-133 Highway #60 P1H 1C2
Huntsville, Ontario
Phone: 705-789-4171
Fax: 705-789-1097
Email: info@ejwilliamssurveying.com